



# Edge Hill

STATE SCHOOL  
*Honour and Labour*

## School Guide

### PREP





## Contents

- 2 Welcome
- 3 Contact Information
- 4 School Profile  
School Vision
- 5 -11 The Prep Year
- 12 Behaviour Management
- 13 School Uniform
- 14 Uniform Details
- 15 - General Information



## Welcome

At Edge Hill State School, our primary focus is to equip students with the knowledge and skills they need for lifelong learning. We actively engage with students to foster a positive attitude towards learning and encourage them to take ownership of their own educational journey and behaviour.

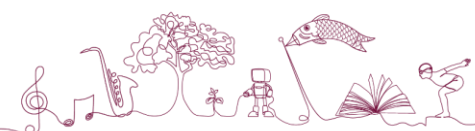
We extend a warm invitation to all parents and guardians to be actively involved in our school community. Education is a collaborative effort, and when parents and teachers work together, it greatly benefits the growth and development of each child.

Effective communication is key to this partnership's success, and we highly encourage parents, teachers, and the school to maintain open and regular contact. Whether through newsletters, phone calls, emails, or meetings, these channels ensure we stay connected and informed about our students' progress and needs.

Additionally, we invite you to participate in various support groups, such as the P & C association, Tuckshop, and classroom helpers. Your involvement in these groups can make a significant positive impact on our students' educational experience.

At Edge Hill State School, we take pride in our tradition and look forward to a bright future. Together, we form a dynamic and caring learning community. I wholeheartedly welcome you to join us in this journey of education and growth.

Jane Termaat  
Principal







*Edge Hill*  
STATE SCHOOL  
*Honour and Labour*



## Contact Information

**Address** -254 Pease Street, Edge Hill QLD 4870

**Postal Address** - PO BX 493H, Edge Hill QLD 4870

**Email:** [admin@edgehillss.eq.edu.au](mailto:admin@edgehillss.eq.edu.au)

**Website:** [www.edgehillss.eq.edu.au](http://www.edgehillss.eq.edu.au)

**Facebook:** <https://www.facebook.com/EdgeHillSS>

**Principal :** Ms Jane Termaat [jterm2@eq.edu.au](mailto:jterm2@eq.edu.au)

**School Administration Office:**(07) 4037 9555

**Office hours:** 8am – 4pm

**Monday to Friday** during school terms

**Student Absence Phone:** (07) 4037 0566

**Student Absence text:** 0418 138 789

**Student Absence email:** [studentabsence@edgehillss.eq.edu.au](mailto:studentabsence@edgehillss.eq.edu.au)

**OSHC:** (07) 4037 9519, 0488 027 775

**Tuckshop:** 4037 9572

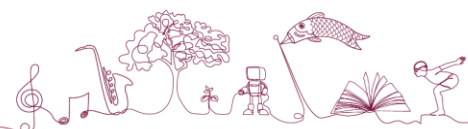
**Tuckshop Orders:** [www.flexischools.com.au](http://www.flexischools.com.au)

**Parents and Citizens Assoc:** [pandc@edgehillss.eq.edu.au](mailto:pandc@edgehillss.eq.edu.au)

**Dental Clinic:** 1300 300 850

**Uniform Shop:** 4037 9512

**Uniform Shop email:** [uniforms@edgepandc.org.au](mailto:uniforms@edgepandc.org.au)



# School Profile

Edge Hill State School takes pride in its reputation among students, parents, teachers, and the local community. It is well-regarded for its academic success and dedication to providing a safe and caring learning environment. The school's well-rounded curriculum prioritizes the individual's growth and development, and it places a high value on building a strong partnership with parents.

One of the school's strengths is its excellent resources, including facilities such as the swimming pool, Performing Arts Centre, Innovation Centre, basketball stadium, art studio and extensive ovals. As an accredited school for international students, Edge Hill State School actively promotes respect for diversity and emphasizes critical thinking and creativity, ensuring that its students are well-equipped to become global citizens in a sustainable world.



The school places a special emphasis on Studies of Asia across the curriculum, and Japanese is taught from Prep to Year 6, broadening the students' cultural awareness. The music and instrumental music program at Edge Hill State School is highly regarded, offering students opportunities to explore and excel in the field of music. Additionally, the school takes pride in its well-developed science and environmental education programs, preparing students to be environmentally conscious and responsible individuals. Integrating technology throughout the curriculum ensures that students are well-prepared for the challenges of the future. A strong focus on health and physical education provides students with numerous sporting opportunities, promoting a healthy and active lifestyle.

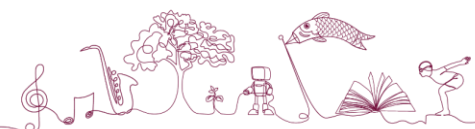
Due to its exceptional reputation, Edge Hill State School operates under an enrolment management plan and often has a waiting list for students from outside its catchment zone, reflecting the high demand for its quality education.

## School Vision

**VISION:** At Edge Hill State School, we will educate the leaders of the future in an environment that endeavours to challenge and support them, to prepare them to be healthy, confident young Australians, living and working in a global society and economy.

**VALUES:** To achieve our vision, we hold these core values close to heart and actively promote them within our school community:

1. **Responsibility:** We encourage our students to take ownership of their actions and decisions, fostering a sense of accountability and maturity.
2. **Personal dignity, self-worth, and awareness:** We believe in building a strong foundation of self-respect and awareness, empowering our students to recognize their value and potential.
3. **Initiative and risk-taking in learning:** We foster a culture where students are encouraged to explore new ideas, take initiative in their learning, and embrace challenges as opportunities for growth.
4. **Interdependence, cooperation, care, and tolerance:** We promote a supportive and inclusive environment, where students learn the importance of working together, caring for one another, and respecting diverse perspectives.
5. **Honesty and happiness:** We uphold the values of honesty and integrity while emphasizing the significance of maintaining a positive and joyful outlook on life.
6. **Life-long commitment to learning:** We instil in our students a passion for learning that extends beyond their time at Edge Hill State School, fostering a desire for continuous growth and improvement.
7. **Diversity:** We celebrate and embrace diversity in all its forms, recognizing the richness it brings to our school community and the broader world.





# PREP YEAR

Prep is a specially designed educational program that will help children make a smoother transition into Year 1 and set the foundation for life-long learning.

The preparatory (prep) year is compulsory and is a pre-requisite for commencing Year 1. Edge Hill State School strongly encourages participation in the Preparatory program as it provides children with valuable experiences to support them make a smooth transition to formal schooling. The compulsory school starting age has increased by six months. Children must be 6 by 30<sup>th</sup> June in the year they enrol in Year 1.

BIRTHDATE	Eligible for Prep Year in:	Eligible for Year 1 in:
Child born 1 July 2020 to 30 June 2021	2026	2027
Child born 1 July 2021 to 30 June 2022	2027	2028
Child born 1 July 2022 to 30 June 2023	2028	2029
Child born 1 July 2023 to 30 June 2024	2029	2030

## GETTING READY FOR PREP

Starting school can be both exciting and stressful for some children and parents. All children have different interests, needs and motivations and each child's transition to Prep will be unique. You can help your child to feel more comfortable about starting school by engaging in everyday activities. Edge Hill State School promotes that parents and staff work together in partnership to support each child's learning.

You can help your child prepare for their first year of school by:

### Building your child's confidence

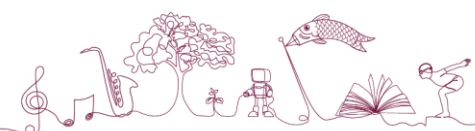
- Talk through and work with them to solve everyday problems (What will I do if I have spilt my drink?)
- Talk to your child about how to ask for help –model what to say
- Encourage your child to tell others what their needs are
- Help your child understand teachers are at school to help

### Strengthening your child's independence

- Helping pack and carry their own school bag
- Encourage independence in personal hygiene (e.g. going to the toilet on their own, using tissues to blow their nose)
- Recognising and being responsible for their belongings (clearly label all your child's possessions for easy identification)
- Have them dress themselves – clothes and shoes
- Involve your child in deciding what to make for lunch
- Ensure they can easily manage their food (easily open lunch boxes/containers, easily manage wrapped items, cut food into smaller portions)

### Having daily routines

- Regular bed time routines
- Waking up at a certain time and leaving plenty of time to get ready
- Healthy and regular meal times (especially breakfast for energy and concentration)
- Make time for daily physical activity



## GET TO KNOW YOUR SCHOOL

- Attend Prep information days so you and your child are familiar with the school and classrooms, as well as the school layout
- Show your child you are interested in their school
- Talk with your child about all the positive aspects of school, such as learning, friends and play

## HOW TO BE INVOLVED

As a parent, you play a vital role in your child's education. You are your child's first teacher and that does not change when your child starts school. You can be involved by:

- Introducing yourself to your child's teacher
- Sharing information with your child's teacher
- Attending parent information sessions
- Reading the school newsletter
- Attending special school events
- Volunteering to attend school excursions or participate in classroom activities
- Attend P&C Association meetings, talk with other parents and volunteer in the tuckshop

## SIMPLE STEPS TO MAKING THE FIRST DAY ENJOYABLE:

- Leave plenty of time to get ready
- Make a wholesome breakfast
- Talk through the daily routine (e.g. start times, lunch, playtime, home time etc.)
- Be positive and encouraging
- Be flexible



## SUPPORTING LEARNING AT HOME

### Writing

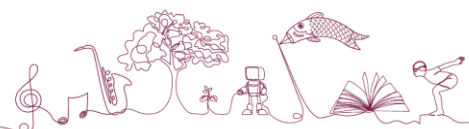
- Provide "junk" materials for drawing, making patterns, and building things;
- Write notes to family members and encourage your child to write by having pencils and crayons available;
- Arrange fine motor activities such as Lego, puzzles, play-dough, cutting, planting and baking; and
- Encourage your child to explore different ways to organise areas, e.g. their bedroom, play area.

### Reading

- Nothing beats reading with your child every night. Your modelling of reading will help to establish a positive attitude to reading and words in their environment;
- Homework will start during term 1. This will encourage good work routines for your child's schooling life;
- Praise all efforts to read and write;
- Talk about everyday items such as signs, letters, siblings names, catalogues, magazines and food packaging, number plate spotting;
- Label rooms and things around the house with words and/or pictures; and
- Read and talk frequently about storybooks, factual books and rhymes.

### Mathematics

- Count everything- Pointing with one to one correspondence is important;
- Encourage your child to experiment with various materials and equipment and identify shapes and colours;
- Show money to your child and talk about it;
- Talk about long/short, wide/narrow, thick/thin, front/behind, next, same/different, full/empty;
- Provide a variety of materials and containers for measuring things - water, grain and sand;
- Discuss quantities and actions while cooking.



## PREPARING YOUR CHILD'S LUNCH

When preparing your child's lunch, please consider:

- The size of the lunchbox as we have only limited room in our fridge;
- Children are not allowed to share lunches;
- Nut based products maybe an issue if there are other students in the class with allergies, please check with the class teacher;
- Food packaging - young children can have difficulty opening some pre-packaged foods; and
- Tins and cans are not encouraged as they can present safety risks.

Please advise us if your child has special dietary needs (in particular please let the office know if your child has any food allergies etc).

### Ideas for Lunch boxes

- A piece of fruit or vegies cut into small pieces;
- A sandwich, roll or wrap with spreads or egg/salad/meat;
- Baked beans/spaghetti in a plastic container;
- Dried fruit;
- Water bottle;
- Crackers and dip/cheese;
- Yoghurt; and
- Cheese.



Prep children do not have access to the tuckshop until week 6 in term 1, as this allows classroom flexibility around eating times at the beginning of the year. There are two ordering methods. Ordering in person before school, fill in a brown paper lunch bag clearly marked with your child's name, grade, order and amount. Or you can create a profile with Flexischools and ordering online from home. Visit [www.flexischools.com.au](http://www.flexischools.com.au) and follow instructions to register.

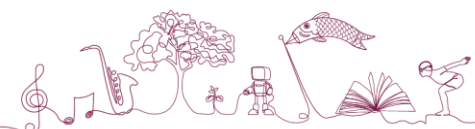
Prep lunch orders are placed in a basket and collected and handed out to the children. These orders are only collected once during the day so if ordering for afternoon tea please be aware that this food will be delivered to your child at 11:00am.

All orders must be received by 8.30am to enable the orders to be processed. To ensure your child does not go hungry, if a particular item is not available or if the lunch order submitted is wrong, the Tuckshop reserves the right to substitute "the food of the day". However, availability of food is not guaranteed unless ordered.

In the event a child arrives at school without lunch the school office will make every attempt to contact parents to arrange a substitute lunch, if unsuccessful an emergency lunch will be provided – sandwich and/or piece of fruit.

### TEACHING AND LEARNING PROGRAMS

Edge Hill State School recognises the importance of early years education and delivers a quality prep program designed to give children the best foundations for future success. The quality of learning experiences in a child's earliest years play a significant role in setting the foundations for lifelong development, including language acquisition, participation and achievement in formal schooling as well as social and emotional skills development. Prep at Edge Hill State School provides children with a positive smooth transition into formal education.





## OUR CURRICULUM

Prep is a new learning environment with exciting things to do, see, touch and experience. Edge Hill State School Prep teachers design learning experiences to cater for children as individuals. We aim to create a relaxed, secure and supportive environment to foster the development of abilities, attitudes and skills that will guarantee progress of each child towards greater levels of independence. The Edge Hill State School Prep program is based on the Australian Curriculum.

### English

By the end of Prep, children should be able to:

- Listen to texts, interact with others;
- Create short spoken texts, including retelling stories;
- Share thoughts and preferences;
- Retell events and report information or key ideas to an audience;
- Use language features including words and phrases from learning and texts;
- Listen for and identify rhymes, letter patterns and sounds (phonemes) in words;
- Orally blend and segment phonemes in single-syllable words;
- Read, view and comprehend texts, making connections between characters, settings and events, and to personal experiences;
- Identify the language features of texts including connections between print and images;
- Name the letters of the English alphabet and know and use the most common sounds (phonemes) represented by these letters (graphs);
- Read words including consonant–vowel–consonant words and some high-frequency words;
- Create short written texts, including retelling stories using words and images where appropriate;
- Retell, report information and state their thoughts, feelings and key ideas;
- Use words and phrases from learning and text; and
- Form letters, spell most consonant–vowel–consonant words and experiment with capital letters and full stops.

### Mathematics

By the end of Prep, children should be able to:

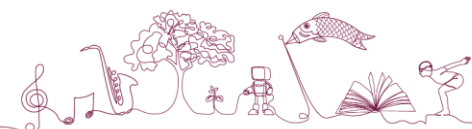
- Make connections between number names, numerals and position in the sequence of numbers from zero to at least 20;
- Use subitising and counting strategies to quantify collections;
- Compare the size of collections to at least 20;
- Partition and combine collections up to 10 in different ways, representing these with numbers;
- Represent practical situations that involve quantifying, equal sharing, adding to and taking away from collections to at least 10;
- Copy and continue repeating patterns;
- Identify the attributes of mass, capacity, length and duration, and use direct comparison strategies to compare objects and events;
- Sequence and connect familiar events to the time of day;
- Name, create and sort familiar shapes and give their reasoning;
- Describe the position and the location of themselves and objects in relation to other objects and people within a familiar space; and
- Collect, sort and compare data in response to questions in familiar contexts.

### STEM (Science, Technology, Engineering and Mathematics)

By the end of Prep, children should be able to:

Describe the properties and behaviour of familiar objects;

- Suggest how the environment affects them and other living things; and
- Share observations of familiar objects and events.





## HASS (Humanities and Social Sciences)

By the end of Prep, children should be able to:

- Describe the features of familiar places and recognise why places are special to people;
- Recognise that places can be represented on maps and a globe;
- Observe familiar features of places and show these on a map or model;
- Share observations in a range of texts to describe direction and location; and
- Reflect on their learning to suggest ways they can care for a familiar place.
- Identify similarities and differences between families;
- Recognise how important family events are commemorated;
- Sequence familiar events in order and pose questions about their past; and
- Relate a story about their past using a range of texts.

## Music

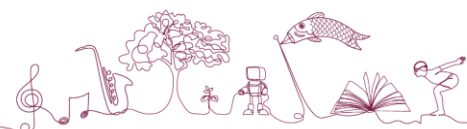
Prep students engage in the general study of music through singing, movement and games. Classes enjoy a specialist lesson each week with our music teacher. In older year levels, students have the opportunity to participate in the school choir, band or our Instrumental Music Program.

## Sport/Physical Activities

Edge Hill State School promotes good health and nutrition through vision screening program, healthy tuckshop choices and our Sun Safe policy. Our Health & Physical Education program engages all students in fun, active skill development. Classes enjoy a specialist lesson each week with our health & physical education teacher. Please note: All physical activities involve inherent risks. Like all state schools, we do not offer accident insurance to cover medical or other costs in the event of accidental injury. We therefore recommend families consider private insurance. Swimming instruction for PREP is in term 4.

**The more that you  
read the more things  
you will know. The more  
that you learn the  
more places you'll go!**

**Dr. Suess**



# Get Set For Prep

Tips for getting your child ready for Prep

## Fine motor

Provide opportunities to help your child develop the physical skills needed to control pencils when learning to write:

- \* painting with a variety of tools (e.g. different sized paintbrushes, fingers, leaves, cotton buds, sponges)
- \* puzzles (make your own puzzles from photos or pictures from magazines, cereal boxes, children's drawings)
- \* threading and manipulating small objects (e.g. bead necklaces, Lego, pegs, tweezers, tongs, cutlery)
- \* drawing (e.g. set up a small 'drawing' table that contains blank paper, pencils, jumbo crayons, felt pens and set aside a five-minute drawing time each day when you can draw with your child).

## Oral Language

Work with you child to develop language and communication skills. Help your child to:

- \* speak and listen for a variety of purposes (e.g. engage in daily conversations with your child, practise giving and receiving instructions and asking for information)
- \* make his or her own needs known (can other children/adults understand what your child is communicating?)
- \* use appropriate greetings (e.g. practise saying hello and goodbye, please and thank you)
- \* learn a repertoire of songs and rhymes
- \* play word games when out together (e.g. play 'I spy' in the car – "I spy with my little eye, something beginning with s" - *make sound*).

## Social & Emotional

Provide opportunities to support your child's social and emotional development. Encourage your child to:

- \* concentrate on a task for a set period of time (e.g. drawing for 2 minutes and slowly increase to 5 minutes)
- \* build positive relationships with other children (invite another child over to visit, take your child to a playground/sport/community event where other children play)
- \* join in with others playing (e.g. smile, stand near the person) and invite others to join in the play (pick up a toy and give it to another child and invite them to play)
- \* help others (e.g. *Let's help Noah to carry some things to the table*)
- \* take turns and to speak positively (e.g. *Your turn! Oh well, let's make another tower.*)
- \* manage and resolve conflict in a positive way (e.g. help your child to 'name' their feelings, talk with others about how they are feeling, use words to tell - sad, upset, angry).

## Early Numeracy

Provide daily experiences to support early numeracy development:

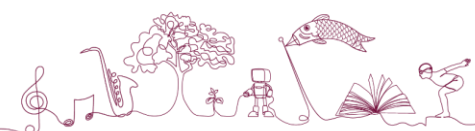
- \* point out where numbers are used in your home (e.g. telephone, computer, clock, TV remote, calculator)
- \* practice counting in meaningful and fun ways (e.g. songs, rhymes, stories, games, setting the table)
- \* create pretend play spaces where children can 'play' using numbers (e.g. a shop, bank, café, post office).

## Early Literacy

Provide daily opportunities that promote early literacy development:

- \* make books part of your child's daily routine (have books in lots of different places around the home)
- \* share a wide variety of books and texts including nonfiction books (e.g. signs, food packaging, recipes, menus)
- \* talk with your child about the parts of books (cover, title, author & illustrator, pages, words, letters)
- \* re-read favourite stories so that your child can join in and 'read' with you (make your own books!)
- \* visit the local library and borrow a wide variety of books to read together

***Make reading a special time. You can help your child enjoy reading from a young age and give them a head start at school.***





# Our Programs- Beyond Prep

Edge Hill State School follows the Australian curriculum, providing a comprehensive education to its students across various learning areas. The diversity of subjects offered, including English, Mathematics, Science, History and Social Science, Japanese, Health and Physical Education, Music, Technology, and the Arts, ensures a well-rounded and enriching learning experience for all students.

## EXCELLENCE IN SPORTS

Provides coaching for identified students to further enhance skill development and knowledge in chosen sports - AFL, Netball & Football (Soccer); Encourages students to participate and represent Edge Hill State School at Interschool, District, Regional and State Sporting Events

## SWIMMING

Edge Hill has an onsite swimming pool. The PE program includes weekly swimming lessons, twice a year, by the PE teacher and a qualified Aus-Swim Coach.

## INSTRUMENTAL MUSIC PROGRAM

Provides expert coaching for strings, woodwind, brass and percussion instruments. Students perform on Assembly, school special occasions and at Eisteddfod. There are also music camps that are held annually. (years 3-6)

## STEM PROGRAM – on hold

STEM Academy provides enrichment activities for students in years two to six via their participation in after-school programs. The topics covered enable the development of a range of 'soft' skills (e.g. collaboration and communication) and 'hard' skills (e.g. construction of robots and the ability to use block code for programming)

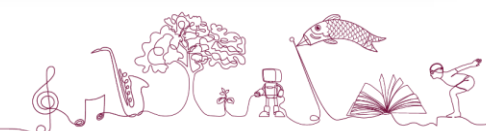
## LANGUAGE PROGRAM

Our Language Program focuses on Japanese and is taught from Prep to Year 6. Biannually we host a study tour to Japan for years 5 and 6. We engage with our sister schools and experience first-hand the Japanese culture which supports our language program. There are limited places available in the study tour.

## EXTRA CURRICULAR ACTIVITIES:

(Some examples include and are subject to calendar and availability)

- Dance/Drama
- Technology
- Active Student Leadership Programs
- Choral Music Program
- Cairns Junior Eisteddfod/Fanfare
- Biennial School Musical Performance
- Annual Athletics Carnival
- Colour Explosion Fun Run
- Rotary Public Speaking competitions
- Year level excursions and incursions
- STEM competitions/Chess Clubs/Competitions
- Special Events Days



# BEHAVIOUR MANAGEMENT

Edge Hill State School follows the Positive Behaviour for Learning (PBL) and Restorative Practices philosophy. Students, teachers and parents are expected to follow the Code of Responsible Behaviour, which is supported by our Responsible Behaviour Plan. Copies of these are available on the school website, or upon request. At Edge Hill State School, our school rules are derived from these four overarching principles:

## STUDENT CODE OF CONDUCT

Productive learning & positive behaviour are inextricably linked. We believe that effective learning takes place when all members of the school community – students, staff, parents and visitors acknowledge and abide by a set of fundamental expectations.

The Edge Hill State School Code of Conduct is based on four core expectations: Be Respectful, Be Responsible, Be Safe and Be a Learner. Edge Hill State School endorses a whole school approach intended to promote and support appropriate behaviours in all students. To facilitate this approach, the school has implemented the Restorative Practices approach and Positive Behaviour for Learning (PBL) framework as a means to revise and develop strategies and procedures to promote a safe, supportive and disciplined school environment.

Our PBL is coordinated by a School Task Team - including representatives from administration, teaching, guidance, behaviour support, parent groups and community organisations. Important principles that guide our work under the PBL framework include:

- Appropriate behaviour needs to be explicitly taught
- Acknowledging students for meeting our expectations is a crucial factor in reinforcing their use of positive and pro-social behaviours

Edge Hill State School offers interventions to support the teaching and reinforcing of appropriate behaviour at different levels. These include:

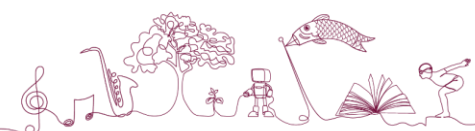
- Universal - for all students
- Targeted- for students requiring extra support
- Intensive - for a small number of students displaying challenging and/or persistent inappropriate behaviour

Upon enrolling, student and parent/s are required to sign the 'Edge Hill State School Student Expectations Agreement', agreeing to abide by the above expectations and rights. Included in this is a student agreement that they are:

*Responsible for their behaviour, and that all behaviour, both appropriate and inappropriate, has consequences, and that consequences will be applied for their behaviour.*

Details about our Code of Conduct, Positive Behaviour for Learning (PBL) framework and interventions are documented in our Student Code of Conduct Policy. A full copy is available from our school website.

[www.edgehillss.eq.edu.au](http://www.edgehillss.eq.edu.au)





# STUDENT DRESS CODE

It is an expectation of the Edge Hill State School Community - the Parents' & Citizens Association (P & C), the Principal and staff - that all students abide by the School Dress Code Policy. A parent/caregiver application to enrol at Edge Hill State School is taken as acceptance of this policy.

## RATIONALE

Our School Community believes that the Dress Code requirement is important in developing a sense of identity and pride for our students. It aligns with the general expectation in today's workforce where, in most instances, there is an established Dress Code at the work site. For students, this school is their work site.

## Our uniform:

- Caters for all students in the school community in a manner sensitive to gender and local cultural and social issues;
- Meets requirements of occupational health and safety, anti-discrimination and equal opportunity legislation;
- Promotes the health and safety of students by identifying items necessary for particular activities e.g. items for sun protection;
- Provides girls and boys with equal access to the full range of school activities.

## The Edge Hill State School student uniform will be worn by students when:

- Attending or representing their school;
- Travelling to and from school; and
- Engaging in school activities out of school hours.

## Wearing school uniforms by students of Edge Hill State School will assist the school community to:

- Define an identity for the school within its community;
- Develop students' sense of belonging to the school community; to build school spirit;
- Enhance the health and safety of students when involved in school activities;
- Promote a sense of inclusiveness, non-discrimination and equal opportunity;
- Reinforce the perception of the school as an ordered and safe environment;
- Increase the personal safety of students and staff by allowing easier recognition of visitors and potential intruders in the school;
- Make school clothing more affordable for families by eliminating the risk of peer pressure to wear fashionable and expensive clothes.

## Healthy and Safety Legislation

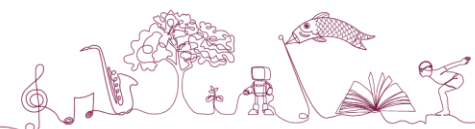
The school must ensure that students are not exposed to risks to their health & safety and must take steps to identify and eliminate or control such risks. Therefore our school:

- Requires students to wear appropriate footwear or other protective clothing to avoid injury;
- Requires students to wear a hat for outside activities when appropriate;
- Requires that jewelry/hair accessories or other items that could cause an injury to themselves or other students are not worn.

## Non-Compliance

The school may impose a sanction in the event of non-compliance:

- Imposing a detention for a student during lunch or after school;
- Preventing a student from attending or participating in any school activity that is not an essential school educational program;
- Preventing a student from attending or participating in any activity for which the student is representing the school.
- Parents will be informed of a student's non-compliance through the normal channels of home school communication



# Uniform Details

**Shorts** – Maroon, mesh style

**Shirt** – EHSS polo

Maroon skorts are also available

**PREP** – PREP polo shirt

**Year 6- Senior** polo shirt

**Hats** – Broad brim maroon outer, house colour inner.

**Shoes** – Fully enclosed footwear (no thongs)

**Socks** – plain, ankle length

## Specialist Programs

May require a specific uniform – Supervisors of these programs will notify parents and uniforms can be loaned to students.

**Sport Uniform** – House colour T-shirt. Maroon shorts.

Worn on sports day only

**Swimming** –swim shirts

## Jewellery – Permitted items

One watch (smart watch must be set to school mode)

One discreet religious necklace

Small sleepers or studs

**Hair** – Neatly groomed

Long hair tied back with discreet hair ties

**Ribbons** – Edge Hill colours maroon & gold

**Jumpers** – Plain, preferably black or maroon

# Not Permitted

**Hats** – caps

**Shoes** – open toed sandals, thongs  
crocs

**Socks** -bright, knee length

**Jewellery** - Beads, shells, chains and/or facial adornment are not suitable for school. Students will be asked to remove inappropriate jewellery. This jewellery will be held for parent collection.

**Hair** – Large hair ties, head bands or clips with adornments, coloured hair spray or dyed hair.

**Make up** – No makeup is appropriate for school including false eyelashes, false nails or nail polish.

**Jumpers** – No insignia, patterns or inappropriate designs

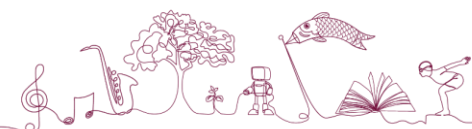
# Sun Safety

Broad-brimmed hats are an essential component of the uniform. The school's Sun Protection Policy, endorsed by P & C, indicates that children must be wearing a hat during all outdoor lessons and playtimes. If children are not wearing hats, the teacher on duty will require that they stay in the shade. Our school is a 'Sun Smart' school. Sunscreen is available in every classroom.

## Parents' & Citizens Association Endorsement

The Parents' & Citizens Association (P & C) of Edge Hill State School resolves that it supports a student dress code for Edge Hill State School because it believes that a student dress code promotes objectives of the Education (General Provisions) Bill 2006. In particular, the P & C of Edge Hill State School supports the intention of a student dress code in providing a safe and supportive teaching and learning environment by:

- Ready identification of students and non-students at the school;
- Eliminating distraction of competition in dress and fashion at school;
- Fostering a sense of belonging; and
- Developing mutual respect among students through minimising visible evidence of economic or social differences.





# GENERAL INFORMATION

## School Hours

8:50am

9.00am-11.00 am

11:00am-11:10am

11.10am-11.35am

11.40am-1.30pm

1.30pm-1.55pm

2.00pm-3.00pm

3.00pm

Prepare for Classes

Lessons

Lunch eating in the classroom

Play time

Lessons

Eating outside and play time

Lessons

Parent pick up



**ABSENCES:** Direct phone line - 4037 9566 or email [studentabsence@edgehillss.eq.edu.au](mailto:studentabsence@edgehillss.eq.edu.au).

Under the law, schools must monitor attendance of students and follow up unexplained absences with parents and caregivers. Your child must attend school ALL school days unless you have a reasonable excuse. You must not keep your child away from school for minor reasons. For more information about attendance please visit <https://education.qld.gov.au/parents-and-carers/enrolment/choosing-a-school/attendance>

Education Queensland policy is that all student absences must be accounted for. Parents/guardians must telephone the school or provide a written note explaining the reason for absence, emails should be addressed [office@edgehillss.eq.edu.au](mailto:office@edgehillss.eq.edu.au) A record is made of your call and all notes are kept on file. Unexplained absences are marked accordingly. Teachers or administrators will contact families where children are absent without explanation.

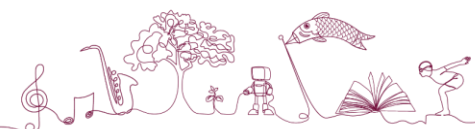
**AMBULANCE:** Every child is covered by Community Ambulance Cover. However, parents are contacted in the first instance wherever possible. Please advise the school immediately if there is any change to contact telephone numbers supplied when enrolling your child.

**AWARDS OF EXCELLENCE:** To acknowledge year 5/6 students who consistently display positive qualities that reflect the Edge Hill Expectations of Learners are Respectful, Responsible and Safe. They demonstrate these qualities in all areas of their lives including in the classroom, the school and the wider community. They act as exemplary role models for peers and younger students. These awards are promoted at the beginning of each year and referred to throughout the year by all stakeholders. (Principal, Deputy Principal, classroom teacher, specialist teachers and supply teachers)

## ASSESSMENT AND REPORTING OF STUDENT PROGRESS

Assessment helps teachers make decisions about what your child knows and can do. Assessment is based on a classroom teacher's direct observations or reflections on students' work and is aligned with the Australian Curriculum's expectations. Throughout the year, all class teachers will complete assessment of their students - focusing on literacy and numeracy skills. The results of these assessments are used to identify individual students that would benefit from additional support or extension activities.

A teacher and parent may meet at various times throughout the year to discuss your child. This may be done through a face-to-face meeting or by phone. Edge Hill State School encourages, and welcomes, families and school working together to ensure that your child has a successful future. We request that meetings are held in a respectful manner with all parties working together (Teacher/Parent/Student) so effective learning can take place.



## Reporting to Parents

While our classroom teachers are available to discuss your child's progress throughout the school year, there are key times of year when we formally report to parents:

### *Parent/Teacher Interviews (end of term 1, beginning term 2)*

Teachers are available for prearranged, individual meetings with parents and their child to discuss the student's individual achievement and learning needs.

### *Student Report (Term 2 & 4)*

Formal reporting is completed for all students in late June and early December each year. Report cards are emailed home in the last week of the school term.



## COMMON ROUTINES

- **Class lists:** Class lists for the following year are emailed out to parents on the last day of school.

### *Before and After School*

- **Before school:** School starts at 9am, with the bell being played at 8:50am. Students are not supervised before school. Students should arrive at 8.30am. If they arrive earlier, they must wait in the undercover area until the 8.30am bell, where they can then take their bag to their classroom. Children are able to play in all play areas from 8:30am.
- **After School:** Prep children are to be collected from the classroom at 3pm. All other children must be collected from the school by 3:15pm. Children not collected by 3:30pm are escorted to the office and their parents are contacted by school staff. **Please note: due to health and safety regulations, children are not allowed to play on the playgrounds before 8:30am, after school or on the weekends.**

**Late arrivals / early departures:** All students must present themselves to the front office when arriving late or departing early from school and must sign in through the school register.

**COSTS AND CHARGES:** Costs of school excursions and school camps will be advised as appropriate. Payment is accepted by following the instructions on the invoice. Bpoint or the 1300 number provided can be used.

**CYCLONES:** Cairns is located in a cyclone zone with the cyclone season being from November to April. If a significant cyclone threat emerges during the day, parents will be advised at short notice through local radio stations. Adequate supervision will be provided until students are collected. If a cyclone develops during the night, school closure will be decided by the Executive Director in consultation with the police. Advice will be made available through local radio stations.

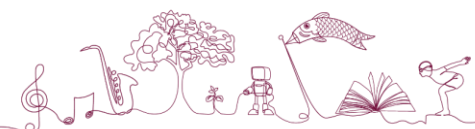
**DENTAL CLINIC:** (1300 300 850) There is a QHealth dental clinic located within the school grounds. The dental therapist usually sees every child at least once per year. A notice will be sent home when a child is due to visit the clinic. Parents need to sign this letter. Appointment cards are sent out. Please be on time. Please feel free to contact them if a problem arises with your child's teeth.

**EMERGENCY EVACUATION/FIRE/LOCKDOWN:** Children will receive periodic instruction on Emergency Evacuation or Lockdown instruction, which involves learning how to evacuate the buildings in case of fire or locking down in the classroom. All visitors should be familiar with this drill as well and comply with direction from school staff in the event of one of these events occurring.

## FAMILY AND COMMUNITY INVOLVEMENT

Parents and families are an important part of our school community. Edge Hill State School encourages families to become involved in their child's broad education experience with us - by keeping in regular communication with teachers, volunteering in class, and/or joining our P&C Association.

### *Communication*





Open communication between home and school underpins a great school experience for children. Please feel free to discuss any problems or queries.

#### *From the School*

To ensure that you always know what is happening in our school, we provide important information through the following:

- Class newsletters – beginning of every term
- School newsletter – emailed out each Tuesday fortnight
- School Website - [www.edgehillss.eq.edu.au](http://www.edgehillss.eq.edu.au)
- Parent information nights & special events
- Facebook page
- P&C Meetings – 4<sup>th</sup> Wednesday of the month

#### *From your family*

We encourage you to share any news, concerns or questions with our school. General events in your family life – such as illness, new babies and visitors can be a source of excitement or concern for young children, and so may affect their behaviour. Please let your classroom teacher know of any such events. You are welcome to discuss any problems or queries with your classroom teacher – especially in regards to your child's progress, the school or other concerns. Teachers will be happy to make appointments for longer discussions.

#### *Contacting Staff*

You may contact your child's teacher by leaving a message through our School Administration Office. Many of our teachers may also make use of their professional email account for communication with families. We encourage you to speak directly with your child's teacher to negotiate the best way of staying in regular contact.

#### *Parent information sessions*

At times throughout the year, Edge Hill State School will host both formal and informal parent events. The focus of these may vary from introducing curriculum changes, sharing helpful tips about helping your child's learning at home to open discussions about an important, emergent topic. All events are advertised in our newsletter, school Facebook page and school noticeboard.

#### *School Annual Report*

Each year, Edge Hill State School publishes an annual school report for the previous school year. This report outlines our achievement across a number of key performance areas, including student learning outcomes, resource management and community engagement. Electronic copies of the report are available on our website.

**HIRE OF SCHOOL FACILITIES:** The office maintains a booking plan for the hire of school facilities.

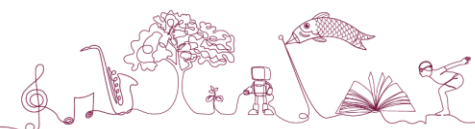
**HOMEWORK:** At Edge Hill State School, we value the opportunity that homework provides to enable the extension of class work by practising skills or enriching learning. No minimum time requirements are set as research shows that the quality of homework is more important than the quantity of homework tasks.

Homework will mainly consist of independent reading or daily reading to someone in the family. From time to time it may also provide opportunities for students to apply new knowledge or to review, revise and reinforce newly acquired skills. General principles are that homework relates to what is being taught in the classroom;

- that it is aligned with individualized needs and abilities;
- that it engages students in learning and
- that it involves timely appropriate assessment and feedback.
- The setting of homework needs to take into consideration the need for students to have a balanced lifestyle. This includes sufficient time for family, sport and recreation and cultural pursuits where appropriate.

Homework tasks could include:

- reading for pleasure and or for information
- practising spelling words and/or sight words
- practising physical education skills



- writing essays and other creative tasks
- practising and playing musical instruments
- completing consolidation exercises for Mathematics
- practising words/phrases learnt in a Language Other Than English
- independent research or project
- self-directed learning

## INFECTIOUS DISEASES

Some medical conditions require exclusion from school to prevent the spread of infectious diseases. Diseases such as Measles, Chicken Pox, Mumps and Hepatitis are readily communicable and cause some children to suffer long lasting effects. Please see the “Time Out” table below for information on the recommended minimum exclusion periods for infectious conditions.

Chicken Pox	Exclude until fully recovered or for at least five (5) days after the first eruption.
Conjunctivitis	Exclude until discharge from eyes has ceased.
Head Lice/Scabies	Re-admit the day after appropriate treatment has commenced.
Ring Worm/Hepatitis A	Exclude until medical certificate of recovery is received.
Measles	Exclude for at least four (4) days from the onset of rash.
Mumps	Exclude for nine days or until swelling goes down (whichever is sooner).
Rubella/German Measles	Exclude until fully recovered or for at least four days after the onset of rash.
Impetigo/School Sores	Exclude until sores have fully healed.
Whooping Cough	Exclude the child for five days after starting antibiotic treatment.
COVID 19	Exclude while symptoms appear. Wearing of face mask indoors for 7 days after a positive test.

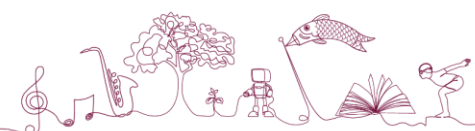
Edge Hill State School follows the exclusion guidelines provided by the National Health and Medical Research Council.

**INTERNATIONAL EDUCATION:** We welcome international students to our school. International students may attend as full fee-paying students on either long or short term visas. Our school also encourages visits by overseas students and educators on study tours. From time to time we ask the assistance of families to act as host parents for visiting students.

**INTERNET ACCESS:** The internet provides our students with valuable learning experiences. All websites accessed through school computers are filtered through Education Queensland's Managed Internet Services. Together with the supervision of our teachers, we aim to minimise the risk of students being exposed to harmful information. Student access to the internet is monitored through individual logins and passwords.

**LIBRARY:** The Library is a very important resource area of our school and is open daily for class and individual visits. Children are encouraged to borrow regularly from the library and this can be done before school and at lunch times. It is recommended that children have a library bag in which to keep their books clean and dry.

**LOST PROPERTY:** All items of lost clothing (except for togs/ towels which, if left in the pool area, will be placed in the lost property bin at the pool) are placed in the shelves under the stairs, at A Block. Small items such as watches and purses containing money are kept in the office. Unclaimed, unnamed articles are donated to charity at the end of each semester. To ensure your child's belongings are returned to them, **please name each article clearly.**



**LUNCH:** Our first break is at 11:00am. Please ensure your child has an adequate breakfast and something substantial as this break is regarded as lunch. Teachers supervise first break eating time in their classrooms. Talk to the teacher or friends to gather ideas for what children like to eat. In accordance with 'Smart Choice' healthy food and drink strategy, lollies, junk food and soft drink are not acceptable at school. *We also encourage waste free lunches if possible.*



**MOBILE PHONES/SMART WATCHES:** Edge Hill is a **device free school** and mobile phones should not be brought to school. In the case of walking or riding to school and parents require their child to have one for safety, mobile phones must stay in school bags at all times, until the student is off school grounds. Mobile phones must be turned off upon entering the school premises and not turned on until after 3:00pm dismissal. Smart watches must be set to school mode during the school day. The school is not responsible for damage or theft of mobile phones or smart watches that are brought to school.

## P & C ASSOCIATION

Our P & C Association welcomes you to our school. Parent involvement at all levels is actively encouraged and valued. The P & C meets as an executive group with school leaders. A published annual plan shares the P & C involvement in the school. Services and facilities which are under the auspices of the P & C are:-Tuckshop, Outside School Hours Care and the Uniform Shop.

**Uniform Shop:** Direct phone line 40379512 or email Emma (Operations Manager P&C) [operations@edgepandc.org.au](mailto:operations@edgepandc.org.au). EDGE P & C offer an online store for ordering. The online store allows a more streamlined service to families.

- On-line orders can be done through [www.edgepandc.org.au](http://www.edgepandc.org.au)
- Uniform shop( A Block) opens on **Tuesday morning from 8:15am to 9:15am, and afternoon 2.30-3.15pm** or by appointment at [uniforms@edgepandc.org.au](mailto:uniforms@edgepandc.org.au)
- Online orders will receive an SMS to advise when orders are ready for collection from the Uniform Shop or OSHC

Second hand uniforms are available at the Uniform Shop. Donations of second-hand uniforms are gratefully accepted. These can be dropped at the shop.

**Out of School Hours Care:** Direct phone line - **0488 027 775**. The school (under P & C auspices) provides high quality Outside School Hours Care for children at a reasonable cost. The children are supervised by employed aides and participate in a variety of activities throughout the semester. The OSHC program is run under the supervision of the P & C and the Department of Communities and meets a very real need for safe supervised care for the children of working parents. Vacation care is also organised for school holidays and student free days. Organisation and Behaviour Management reflect school expectations.

**Tuckshop:** Direct phone line - 4037 9572 or order on line at [www.flexischools.com.au](http://www.flexischools.com.au). Flexi school cut off time is 8.30am (Flexischools Help Line is available on 1300 361 769) or order directly at the Tuckshop before 9:00am. Eftpos is available for orders placed before school. Please use a paper bag or envelope with class, name, whether food is required for lunch or afternoon tea, do not staple bags.

The School Tuckshop operates daily. A Tuckshop Convenor manages the tuckshop on behalf of the P & C.

### WHAT WE DO

**Out of School Hours Care**  
and Vacation Care  
Before and after school  
every day, pupil free days  
and school holidays  
Bookings Ph 4037 9519

**Tuckshop**  
Breakfast & Lunch  
Open every day  
Birthday Icy Poles available  
Orders via Flexischools App

**Uniform Shop**  
Hats, Shirts, Shorts/Shorts,  
Jackets, Rashies, Goggles  
Open Wed 8.15 to 9.15am  
Order online  
[www.edgepandc.org.au](http://www.edgepandc.org.au)

**Sustainability and Environment**  
Containers for Change Pod  
Scheme ID C10213846  
Supporting the Kitchen  
Garden Program

**Infrastructure & Resources**  
Play Grounds, Shade Sails,  
Undercover Walkways,  
Books, Sports Equipment,  
Musical Instruments,  
Classroom Refrigerators

**Events**  
Big Family Breakfast,  
Discos, Book Fairs  
Mothers/Fathers Day,  
and more...

For further information please visit [www.edgepandc.org.au](http://www.edgepandc.org.au)

### HOW YOU CAN HELP

**Admin & Communication**  
Grant Applications  
Financial Management  
Budgeting  
Social Media  
Advertising / Marketing

**Attend Meetings**  
4th Wednesday each month  
(excluding school holidays)  
All Parents, Carers, and  
Community minded people  
are welcome.

**Working Bees**  
Cleaning,  
Organising,  
Gardening,  
and other tasks

**Fundraising**  
Help with our many events  
Sausage Sizzles, Movie  
Nights, Garage Sales, Raffles,  
and many more...

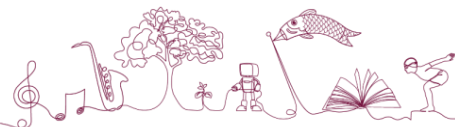
**Safe School Travel**  
Requires the involvement  
and engagement of schools,  
local government, state  
authorities, and parents.

**Infrastructure**  
Working with school to  
Identify future capital  
projects and improvement  
of facilities.

For further information please visit [www.edgepandc.org.au](http://www.edgepandc.org.au)



**Edge Hill**  
STATE SCHOOL  
*Honour and Labour*





P & C meetings are held every fourth Wednesday of the month during school terms (excluding school holidays). Meetings are held at 6.15pm in the Administration building.

P & C contact: [pandc@edgehillss.eq.edu.au](mailto:pandc@edgehillss.eq.edu.au)

The P & C has a voluntary levy, \$90 per family or \$50 per child which is used to reduce the pressure of fundraising for the school. This levy is **not** tax deductible.

Our P & C believes it is very important to include families and community members at our school.

A number of community events are sponsored to do this each year. Some of these, but are not limited too: Art Expo, Big Family Breakfast, Welcome Morning Teas for parents and students, movie nights, Advancement Ceremony for Year 6.

**PLANNING AND ACCOUNTABILITY:** The operation and development of this school is directed by a Strategic Plan and an Annual Operational Plan. Copies of the Strategic Plan and Annual Plan are available on the school website. Reporting on student learning outcomes will be through interviews, report cards, presentations and interpretation of a range of data.

**RELIGIOUS EDUCATION:** Queensland legislation allows for religious instruction to be offered in Queensland state schools. Classes are taught by instructors from faith groups using a curriculum authorised by relevant faith groups. At Edge Hill students in **Years 1-6** have the opportunity to participate in a weekly 30 minute program of instruction offered by a combined Christian faith group. A program is also offered by the Baha'i faith. Religious instruction is only to be provided to students whose parents have given written permission for their child to participate. (Included in the application for student enrolment) The school provides alternative arrangements for students who do not attend religious instruction.

**ROAD SAFETY:** Our school community is very concerned about the safety of all its members. We therefore ask families to strictly observe all of the signs and traffic rules. Please do not double park. Use the drop-off zone as indicated. If you have to visit school please park in an appropriate zone. The parking lots set aside off Russell and Pease Streets are for school staff or volunteers working in the school only. Please do not drive into these areas to pick up students as this endangers students' lives. While crossing supervisors are employed by the Department of Transport, they are fully supported by the school staff and community. Please cross with lights on in crossing zone. Pease Street is a 40 km/h zone from 7:30am - 9:00am and 2:30pm - 4:00pm. We have a series of Road safety videos produced that are targeted at our school and surrounding areas. [LINK HERE](#)

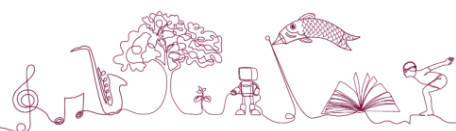
## SPECIAL EVENTS

### *Choir (Singing)*

Edge Hill State School has a Senior Choir and Junior Choir that perform at school and community events and participates in the Cairns Eisteddfod. Choir involves practices during selected lunch hours and school time. The junior school choir can be made up of children from years 2 - 3. The senior choir is made up of children from Years 4- 6.

### *Excursions*

There are times when teachers organise off-site excursions for students. The excursions are clearly linked to curriculum outcomes. Parents are notified in advance of the excursion, the purpose, and costs involved and other pertinent information. The P&C and Principal approve all school excursions. All year levels have excursions and incursions. There are also specialist excursions for targeted groups for example STEM competitions, Japanese Study Tour, Youth Parliament and Bird Club to name a few.



### School Discos

School discos for students and are held in the Performing Arts Centre. Disco times vary for each year level. All times are advertised prior to the disco in the school newsletter. Discos are run as a fundraising event for the P&C, parental supervision is provided and food & drinks are available.

### SPORTS HOUSES

There are four sporting houses. Red Dragons, Purple Serpents, Blue Giants and Green Gryphons. Students are allocated a house on enrolment. There are house colour shirts available from the uniform shop and students are encouraged to wear these on Athletics Day, which is held in Term 2.



**STUDENT COUNCIL:** An active and comprehensive Student Leadership team exists with School Captains, Music Captains, PE Captains, House Captains, STEM Captains, Language Captains and class representatives from each year five to six class. These representatives have varying roles within the school. Meetings are usually held at lunch time. Captains are chosen/elected at the end of Year 5 through a process outlined to the students and available in our Student Leaders Handbook. Each year our student council sets goals and school improvements to achieve. Each year the School Captains attend a training day teaching them about meeting procedures, leadership skills, decision-making processes, school plans and future planning.

### STUDENT HEALTH

#### First Aid

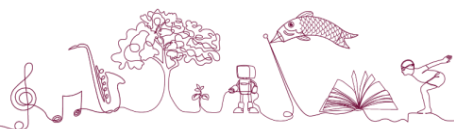
Members of our school staff are permitted only to render basic First Aid. This is immediate, temporary treatment given by the staff in case of an accident. Should medical treatment beyond First Aid be required, parents are notified immediately whenever possible and/or the necessary treatment arranged. In case of a serious accident, an ambulance will be called to transport the injured child to a doctor or hospital.

#### Administration of Medications

All medication to be taken by children at school should be brought to the School Administration Office to be administered under the supervision of the Administration team. Parents must bring medication to the office and complete the 'Permission to Administer Medication'.



*Edge Hill*  
STATE SCHOOL  
Honour and Labour





Please note, school staff will only administer medication that:

- has been prescribed by a qualified health practitioner (e.g. doctor, dentist)
- is in its original container
- has an attached pharmacy label

All medication must be labelled in the name of the child with a pharmacy prescribed label. This includes; cough medicines, Ventolin and Aspirin, Disprin, eardrops etc. No medicines can be accepted without a completed 'Permission to Administer Medication' authorisation from the parents/guardian. *Non-prescribed oral medications (such as Panadol) should **not** be brought to school and will **not** be administered by any staff.*

Parents are to advise the School Administration Office of details of any children who self-administer approved medication. e.g., medications for Asthma, Diabetes and Epilepsy.

## STUDENT CODE OF CONDUCT

Edge Hill State School Student Code of Conduct outlines how school staff will work together with students and families to develop positive student behaviour. It is founded on the premise that with appropriate support and explicit teaching, every child can be successful in meeting behaviour expectations. The [Student Code of Conduct](#) describes for all stakeholders the approaches that will be taken to teach expected behaviour, the responsibilities of all stakeholders and the actions and consequences that will occur when expected behaviours are not achieved.

## STUDENT INFORMATION

It is important that you inform the school as soon as possible if there are any changes to:

- Contact details- phone numbers, email address, residential address
- Medical information- if your child takes medication at home on a regular basis please advise the school of the type of medication and dose. This information is recorded in our oneschool data base in case there is ever a need to call an ambulance for your child.
- Family circumstances
- Legal court documents

### *Custody/Parenting Arrangements*

Information regarding your family circumstances is essential to help us to understand and support your child while at school. A copy of a court order or custody order is necessary so that school staff can help ensure the legally designated parent or guardian collects children.

### *Birth Certificates*

Education Queensland regulations state that proof of age and identity must be sighted before enrolment into school.

### *Student Records*

Individual student records are kept on file at our school including: copies of student's report cards, absence details, record of behaviour issues and contact information. These are available to parents/guardians upon written request, addressed to the Principal.

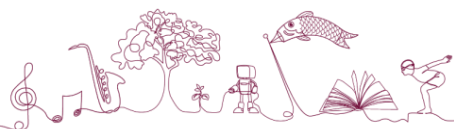
## STUDENT RESOURCE SCHEME:

The Queensland Government supports students' education by providing funding for:

- Instruction (e.g., teachers)
- Facilities (e.g., buildings, amenities, furniture)
- Administration (e.g., staffing and resources to manage school operations)

However, funding does not cover individual student resources such as textbooks, stationery for personal use, or many classroom consumables.

To offer parents a cost-effective solution for acquiring textbooks and resources, Edge Hill State School will operate the Student Resource Scheme (SRS) for 2025. This scheme ensures that all the learning materials your child needs are delivered directly to the classroom for the year. Our bulk buying power allows us to save families time, money,





and the hassle of sourcing materials elsewhere. Savings are achieved through the school's bulk purchasing practices and resource-hiring arrangements. The SRS is not used for fundraising; revenue collected is allocated solely to resources and the operation of the scheme.

By having the majority of students enrolled in the scheme, we ensure that each class is fully equipped from the first day of school, promoting a smooth start and quality learning experiences right from the beginning. **Please see the parent information and costs (see left) for your appropriate year level.**

<https://edgehillss.eq.edu.au/calendar-and-news/news/student-resource-scheme>

## STUDENT STATIONERY REQUIREMENTS

Students also require stationery for their every day work. These items are not part of the SRS and need to be purchased separately. **Please see the EHSS student stationery lists for your appropriate year level.**

## SUPPORT SERVICES

*Chaplaincy Service:* Edge Hill State School offers students access to a chaplaincy program which is an optional service to provide students, staff and parents with support which may have a religious and/or spiritual component. Chaplaincy services provide an additional adult role model in schools. Whilst personally modeling and owning their own faith positions or belief, chaplains avoid any implications that any one religion, denomination or other set of beliefs is advantageous or superior to any other denomination, religion or belief.

*Student Welfare Team:* Children's learning cannot always be separated from other concerns in their lives. Where a student is experiencing issues associated with their social and emotional wellbeing, that impact upon their learning outcomes, the school may be able to provide short term assistance through the services of the Guidance Officer, Social Workers or Youth Support Worker. Access to these services happens through a referral process triaged by the Student Support Services team.

*Inclusive Education:* Students who experience challenges accessing curriculum due to a diagnosed disability or other barrier to learning (learning disorder, EALD, challenging behaviour etc.), are serviced by our Education Support Team.

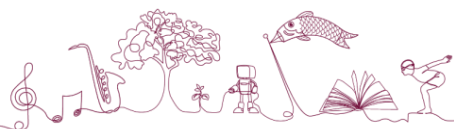
*Education Support Team:* This team work collaboratively with classroom teachers and families to make reasonable adjustments to a student's teaching and learning environment in order support them to successfully access curriculum. Access to this support is determined through a referral process and is monitored through case management, regular review and data collection.

*Regional Support Services:* From time to time a student will require support and intervention from one or more specialist personnel in order to assist them to be a successful learner. The Region employs a range of specialists who are able to work with schools to build capability of the school team to support individual students with specific needs. Specialist Staff may include Speech Pathologists, Occupational Therapists, Physiotherapists, Autism Coach, Complex Behaviour team and Advisory Visiting teachers. A student is referred to these regional support personnel by the Deputy Principal Learning and Inclusion in consultation with the parent/carer.

*Support Dogs:* Edge Hill SS is privileged to have several support dogs available to work with students to support student wellbeing. These highly trained dogs work under the direction of a qualified staff member and are used in a variety of ways including to enhance connection, motivate, calm and regulate students.



*Edge Hill*  
STATE SCHOOL  
Honour and Labour





**SWIMMING CLUB - EDGE HILL TIGER SHARKS:** Direct phone line 4032 1423. From August to March, the swimming club provides learn-to-swim classes, fitness swimming and competitive swimming for local children. The pool is also available for hire all year round provided insurance coverage is adequate.

**VISITORS AND VOLUNTEERS:** We welcome visitors and helpers to our school. We ask you to sign in at the classroom or at the office if you are staying, to ensure you are covered by insurance in the event of an accident. A name tag obtained from the office or classroom should identify all visitors. All voluntary workers are required to sign the visitors register at the school office or the Volunteer Register kept in each classroom. Blue Cards are required by volunteers who are not directly working in their child's classroom.

**WET DAYS:** When it is too wet to go outside and play, students will be supervised using internal school resources during lunch break.



**You're off to Great Places, Today is your day.**

**Your mountain is waiting, So... get on your way!"**

**Dr Suess**



*Edge Hill*  
STATE SCHOOL  
Honour and Labour

