

2024 Student Resource Scheme Annual Parent Information Letter

Dear Parents/Guardians/Carers,

This letter contains important information about the 2024 Student Resource Scheme (SRS) including how the scheme operates and the annual participation fee.

The Queensland Government supports students' education by providing funding for:

- Instruction, e.g. teachers
- Facilities, e.g. buildings, amenities, furniture
- Administration, e.g. staffing and resources to administer operations of the school.

Funding does not extend to individual student resources such as textbooks and stationery for personal use, and many items used/consumed by the student in the classroom.

To provide parents with a cost-effective alternative to purchasing textbooks and/or resources elsewhere, Edge Hill State School operates an SRS for 2024.

The scheme will provide your child with all their learning resource needs direct to the classroom for the year. Our bulk buying ability enables us to save you money, time and the inconvenience of finding resources. Savings are gained through the school's bulk purchasing practices and hiring arrangements. The scheme is not used to raise funds for other purposes, and revenue collected through the scheme is applied only to the resources and operation of the scheme.

Having the majority of students in the scheme allows each class to be set up ready from the first day of school, ensuring quality learning from day one.

Resource Inclusions

All resources included in the SRS are detailed in the attached 2024 SRS Resource list.

This is a comprehensive list of all resources included in the scheme and their associated costs and consists of 3 parts:- Part A, Part B and Part C.

Part A includes the classroom consumables levy, Teacher prepared material and IT subscriptions. **All** students will be invoiced for Part A.

Part B is the Student Stationery Requirement booklist per year level. This list is also available on the school's website. Should you choose **NOT** to participate in Part B of this scheme, you will need to purchase your child's requirements as per the Student Stationery booklist Part B and bring them to class on the first day of school.

Part C is additional items required for year level specific, as per below.

Individual year levels will also require the following compulsory items, which will be invoiced separately.

Years 1 -6 will be invoiced for Spelling Mastery text book.

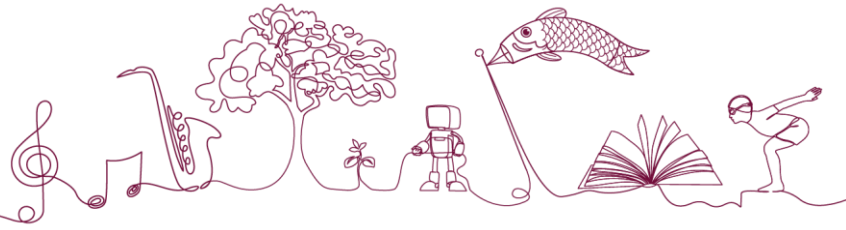
Year 3 will be invoiced for Japanese Puni Puni book.

Year 4 will be invoiced for Kitchen Garden program.



Edge Hill

STATE SCHOOL
Honour and Labour



Costing Methodology

The schools SRS fee is calculated based on a flat fee for all students in the school. Please refer to the 2024 SRS Resource List for the associated costings.

The SRS Participation Fee

The SRS fee payable for the year is available in the attached information and published on the school's website.

Payment Method

SRS payments can be made by

- **Cash or Credit Card/Eftpos** in person at the office.
- **BPoint**, When paying by BPOINT, please use the Customer Reference Number (CRN) and invoice number printed on the invoice received from the school. If unsure of the CRN, please contact the school.
- **Centrepay**, Centrepay Deductions are available to pay the SRS fees. Centrepay deductions will be arranged by the schools Business Manager. (Conditions Apply-Maximum 10 Payments).

Please complete the SRS Fee Payment Arrangement Form and the Student Resource Scheme Participation Agreement Form and return to the school Administration Office by 27th November 2023.