



Edge Hill

STATE SCHOOL

Honour and Labour

International Student Parent Handbook



An Education Queensland International School
The Queensland Department of Education
Trading Name: Education Queensland international (EQI)
CRICOS Provider Number 00608A



Inspired, Inquisitive, Inventive

Contents

- 2 Charter for Excellence
- 3 A Message from the Principal
Support Staff
- 4 General Information
- 5 School Map
- 6 Our Programs
- 7 Student Support Services
- 8 Expectations
Student Code of Conduct
- 9 Emergency and Health
- 10 Complaints and
Appeals
- 11 Contact Information
- 12 Final Note from our P & C

Charter For Excellence

Edge Hill State School believes challenge leads to personal growth - it provides motivation for positive change. Support helps to ensure successful adaptation to meet the challenge.

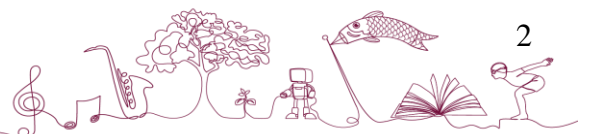
Our teachers will challenge our students with high expectations while supporting them by developing meaningful relationships and providing for individual learning needs.

Our curriculum will challenge students with high expectations whilst supporting their intrinsic motivation to learn with differentiated learning.

Our school will challenge students with high expectations for social and emotional learning while providing them with whole child support.

Our school leaders will challenge teachers to improve performance while supporting their professional growth.

Our school will challenge students to become adaptable and flexible, contemporary learners by supporting them with a rich and diverse digital pedagogy.



A Message from the Principal

Welcome to Edge Hill State School! We are thrilled to have your child as part of our school community. Our dedicated team is excited to work in partnership with you to ensure that your child gains the maximum benefit from their primary education experience here.

At Edge Hill State School, we take pride in being accredited by the Department of Education, Training, and Employment to offer international students the opportunity to study in Cairns. We value the presence and participation of students and families from around the world, and we encourage our students to celebrate diversity and develop critical thinking and creativity.

Our school's core values include responsibility for self and concern and respect for others. We aim to equip our students to be responsible global citizens in a sustainable world today and into the future. Through a safe, supportive, and friendly environment, we nurture our students to strive and thrive, preparing them for a bright and promising future.

We understand the importance of building positive partnerships with parents and families. Many lasting relationships have been built with past students and families from our international student program. During your time with us, we look forward to developing a strong and constructive partnership with you.

As the principal, I am here to support you and your child throughout their educational journey. I extend a warm invitation to you to contact me anytime to discuss any issues related to your child's learning. Together, we can provide a quality education that fosters a desire for lifelong learning and active, responsible citizenship.

Once again, welcome to Edge Hill State School. We are excited to embark on this educational journey with your child and look forward to creating a positive and enriching experience for them.

Jane Termaat
Principal



Jane Termaat



Kirsty Edwards



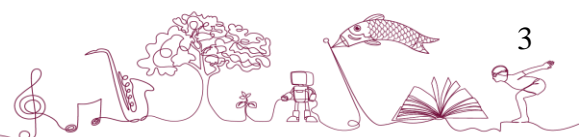
Sharon Brand



Angela Brennan



Ngari Abbott



GENERAL INFORMATION

UNIFORMS

Uniforms play a significant role at Edge Hill State School as they are an essential part of creating a sense of identity and pride for our students and their families. Our Dress Code has been carefully developed in collaboration with the Principal, Staff, and Parents & Citizens Association to ensure that it caters to all students in our diverse school community.

We understand the importance of considering gender, cultural, and social sensitivities, and our uniform is designed to be inclusive and respectful of everyone's individuality. It aligns with occupational health and safety guidelines and complies with anti-discrimination and equal opportunity legislation. The uniform ensures that both girls and boys have equal access to the full range of school activities, fostering an environment of equality and fairness.

HATS

Ensuring sun protection for our students is a top priority at Edge Hill State School, and broad-brimmed hats are a crucial component of our uniform. We take sun safety seriously, and our Sun Protection Policy, which is endorsed by the Parents & Citizens Association (P&C), emphasizes the mandatory wearing of hats during all outdoor lessons and playtimes.

SHOES

Ensuring the safety and well-being of our students is of utmost importance at Edge Hill State School, and that includes their footwear. Our uniform policy mandates that students wear shoes, joggers, or fully enclosed sandals as part of their attire.

Uniform Shop:

operations@edgepandc.org.au

UNIFORM SHOP

The Uniform Shop is open 8.30am to 9.30am on Wednesdays. Orders can be placed on the online www.edgepandc.org.au and picked up from OSHC 7am to 6pm Monday to Friday or from the Shop on Wednesday mornings. You will receive an email from our operations Manager when your order is ready for collection.

Second hand uniforms are available at the Uniform Shop. Donations of second hand uniforms are gratefully accepted. These can be dropped at the shop.

Phone : +617 4037 9512

Email: operations@edgehillpandc.org.au



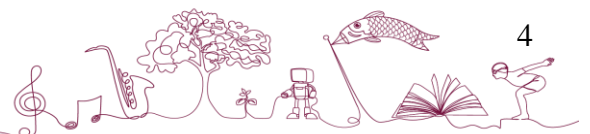
NEWSLETTER

A newsletter is sent out to all families via email each Tuesday fortnight. It is also available online www.edgehillss.eq.edu.au This will help to keep you up-to-date with current school news.

FACEBOOK

You can find out what's happening in the whole school by following our page.

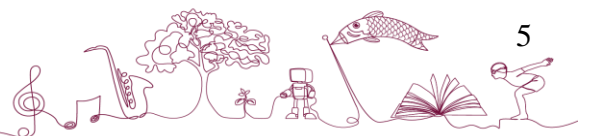
<https://www.facebook.com/EdgeHillSS>



School Map



Visitors must report to the school office



Our Programs

Edge Hill State School follows the Australian curriculum, providing a comprehensive education to its students across various learning areas. The diversity of subjects offered, including English, Mathematics, Science, History and Social Science, Japanese, Health and Physical Education, Music, Technology, and the Arts, ensures a well-rounded and enriching learning experience for all students.

EXCELLENCE IN SPORTS

Provides coaching for identified students to further enhance skill development and knowledge in chosen sports - AFL, Netball & Football (Soccer); Encourages students to participate and represent Edge Hill State School at Interschool, District, Regional and State Sporting Events

SWIMMING

Edge Hill has an onsite swimming pool. The PE program includes weekly swimming lessons, twice a year, by the PE teacher and a qualified Aus-Swim Coach.

INSTRUMENTAL MUSIC PROGRAM

Provides expert coaching for strings, woodwind, brass and percussion instruments. Students perform on Assembly, school special occasions and at Eisteddfod. There are also music camps that are held annually (Years 3-6).

STEM PROGRAM

STEM Academy provides enrichment activities for students in years two to six via their participation in after-school programs. The topics covered enable the development of a range of 'soft' skills (e.g. collaboration and communication) and 'hard' skills (e.g. construction of robots and the ability to use block code for programming).

LANGUAGE PROGRAM

Our Language Program focuses on Japanese and is taught from Prep to Year 6. Biannually we host a study tour to Japan for Years 5 and 6. We engage with our sister schools and experience first hand the Japanese culture which supports our language program. There are limited places available in the study tour.

EXTRA CURRICULAR ACTIVITIES:

(Some examples include but are not limited to and are subject to calendar and availability)

- Dance/Drama
- Technology/STEM competitions
- Active Student Leadership Programs
- Choral Music Program
- Cairns Junior Eisteddfod/Fanfare
- Biennial School Musical Performance
- Annual Athletics Carnival
- Colour Explosion Fun Run
- Rotary Public Speaking competitions
- Year level excursions and incursions



Student Support Services



At Edge Hill State School, we are committed to providing a supportive and nurturing learning environment where every child is encouraged and challenged to achieve their academic best. We understand the importance of your child's education to your family, and we strive to ensure that each student receives the necessary support and guidance to succeed.

Our school has clear guidelines in place to identify and address the needs of students who may require extra support. We are sensitive to each student's unique learning journey, and we ensure that any necessary additional assistance is provided in a timely manner.

We recognize that settling in another country can present challenges, and we are dedicated to making this experience as smooth and enriching as possible for both students and their carers.

Our committed team members are always ready to listen and address any concerns you may have. We encourage open communication and collaboration with parents and guardians to ensure that your child's academic and emotional needs are met during their time at Edge Hill State School.

As an inclusive and caring school community, we value the diverse backgrounds and experiences of our students and strive to create an environment where all students feel welcome and supported. Our goal is to empower each child to reach their full potential and make the most of their educational journey.

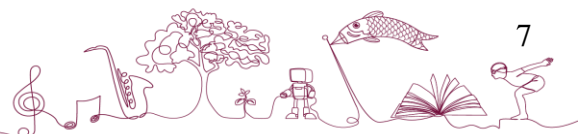
Chaplaincy Service: Edge Hill State School offers students access to a chaplaincy program which is an optional service to provide students, staff and parents with support which may have a religious and/or spiritual component. Chaplaincy services provide an additional adult role model in schools. Whilst personally modeling and owning their own faith positions or belief, chaplains avoid any implications that any one religion, denomination or other set of beliefs is advantageous or superior to any other denomination, religion or belief.

Student Welfare Team: Children's learning cannot always be separated from other concerns in their lives. Where a student is experiencing issues associated with their social and emotional wellbeing, that impact upon their learning outcomes, the school may be able to provide short term assistance through the services of the Guidance Officer, Social Workers or Youth Support Worker. Access to these services happens through a referral process triaged by the Student Support Services team.

Inclusive Education Team: Students who experience challenges accessing curriculum due to a diagnosed disability or other barrier to learning (learning disorder, EALD, challenging behaviour etc.), are serviced by our **Education Support Team**. This team work collaboratively with classroom teachers and families to make reasonable adjustments to a student's teaching and learning environment in order support them to successfully access curriculum. Access to this support is determined through a referral process and is monitored through case management, regular review and data collection

Regional Support Services: From time to time a student will require support and intervention from one or more specialist personnel in order to assist them to be a successful learner. The Region employs a range of specialists who are able to work with schools to build capability of the school team to support individual students with specific needs. Specialist Staff may include Speech Pathologists, Occupational Therapists, Physiotherapists, Autism Coach, Complex Behaviour team and Advisory Visiting teachers. A student is referred to these regional support personnel by the Deputy Principal Learning and Inclusion in consultation with the parent/carer.

Support Dogs: Edge Hill SS is privileged to have several support dogs available to work with students to support student wellbeing. These highly trained dogs work under the direction of a qualified staff member and are used in a variety of ways including to enhance connection, motivate, calm and regulate students.



EXPECTATIONS

EQI International Student Code of Conduct

(modified to apply to Primary School Students at EHSS) –
<http://education.qld.gov.au/behaviour/codebehaviour.html>

Academic Performance

- Students will work hard to achieve satisfactory academic results

Attendance

- Students will attend school regularly and have suitable written explanation for absences - attendance at least 95%
- Students who are away for five or more days in a row need to provide a doctor's certificate or have their absence approved by the Principal

Contact Details

- Parents will advise the International Student Coordinator of current contact details within seven days of any change

Acceptable Behaviour

- Students will obey Australian Laws and regulations at all times
- Students will adhere to the Edge Hill State School Student Code of Conduct
- Students will wear the correct school uniform at school

Failure to follow the Code of Conduct
may be a breach of Visa conditions

Emergency and Health Services

POLICE
FIRE
AMBULANCE
000

Health Insurance

The Department of Immigration and Border Protection (DIBP) requires that International Students must obtain Overseas Student Health Cover (OSHC) for the proposed duration of their student visa. For further information see the DIBP website:

<http://www.border.gov.au/Trav/Stud/More/Health-Insurance>

For-Students Overseas Student Health Cover (OSHC) is compulsory for all International Students in the International Student Program (ISP). Families can pay the approved medical insurer directly, or can request that Education Queensland International arranges the OSHC payment.

Please refer to the Department of Health and Ageing website for further information on Overseas Student Health Cover:

<http://www.health.gov.au/internet/main/publishing.nsf/Content/Overseas+Student+Health+Cover+FAQ-1>

Infectious Diseases

Edge Hill State School follows the exclusion guidelines provided by the National Health and Medical Research Council:

CHICKEN POX

Exclude until fully recovered or for at least five (5) days after the first eruption.

CONJUNCTIVITIS

Exclude until discharge from eyes has ceased.

HEAD LICE/SCABIES

Re-admit the day after appropriate treatment has commenced.

RING WORM/HEPATITIS A

Exclude until medical certificate of recovery is received.

MEASLES

Exclude for at least four (4) days from the onset of rash.

MUMPS

Exclude for nine days or until swelling goes down (whichever is sooner).

RUBELLA/GERMAN MEASLES

Exclude until fully recovered or for at least four days after the onset of rash.

IMPETIGO/SCHOOL SORES

Exclude until sores have fully healed.

WHOOPING COUGH

Exclude for five days after starting antibiotic.

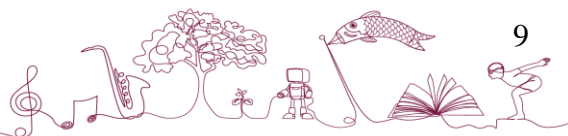
COVID 19

Stay at home if unwell. Wear a face mask indoors for 7 days after testing positive.

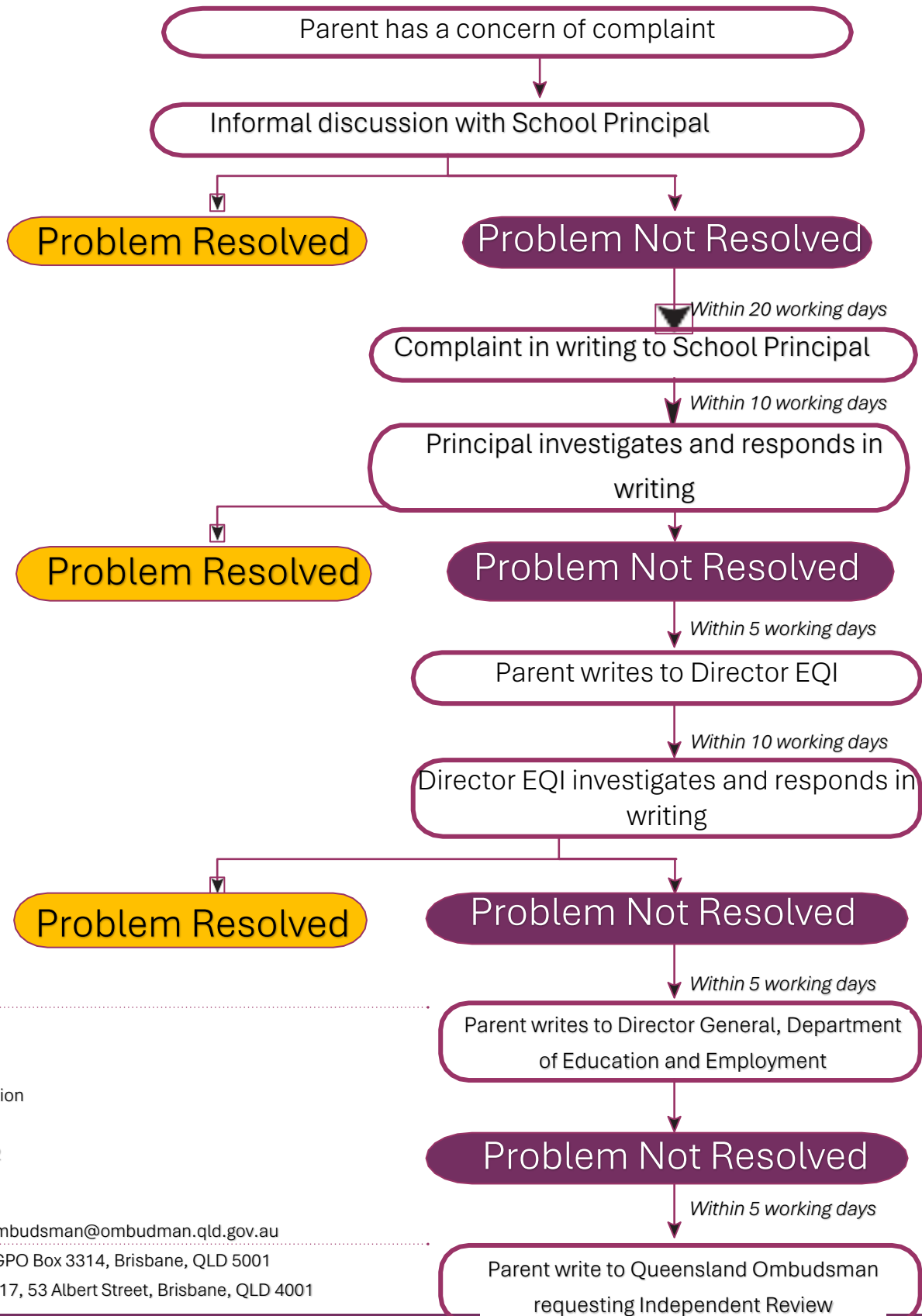
Other Illnesses

DENGUE FEVER

In recent years Cairns has experienced outbreaks of Dengue Fever, a serious mosquito-borne communicable disease.

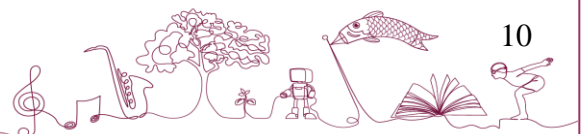


Complaints and Appeals



Director General
Department of Education
PO Box 15050
City East QLD 4002

By email: ombudsman@ombudman.qld.gov.au
By letter : GPO Box 3314, Brisbane, QLD 5001
In person: Level 17, 53 Albert Street, Brisbane, QLD 4001





Edge Hill
STATE SCHOOL
Honour and Labour



Contact Information

Address -254 Pease Street, Edge Hill QLD 4870

Postal Address - PO BX 493H, Edge Hill QLD 4870

Email: admin@edgehillss.eq.edu.au

Website: www.edgehillss.eq.edu.au

Facebook: <https://www.facebook.com/EdgeHillSS>

Principal : Ms Jane Termaat jterm2@eq.edu.au

School Administration Office:(07) 4037 9555

Office hours: 8am – 4pm

Monday to Friday during school terms

Student Absence Phone: (07) 4037 0566

Student Absence text: 0418 138 789

Student Absence email:

studentabsence@edgehillss.eq.edu.au

OSHC: (07) 4037 9519, 0488 027 775

Tuckshop:

Tuckshop Orders: www.flexischools.com.au

Parents and Citizens Assoc: pandc@edgehillss.eq.edu.au

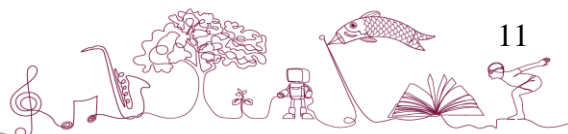
Dental Clinic: 1300 300 850

Uniform Shop: 4037 9512

Uniform Shop email: shop@edgehillss.eq.edu.au



Edge Hill
STATE SCHOOL
Honour and Labour



A Final Note from our P & C

We greatly value and actively encourage parent involvement at all levels. The P & C plays a vital role in our school community, working in close collaboration with school leaders to enhance the overall school experience for our students.

P & C meetings are held regularly every fourth Wednesday of the month during school terms. This provides an opportunity for parents to be actively engaged in the decision-making process and have their voices heard in shaping our school's direction.

Inclusivity is a core value for our P & C, and we actively work to include families and community members in various school events and activities.

We believe that when parents, teachers, and the community work together, we can create a positive and enriching environment for our students to thrive. Your active involvement and support are essential to the success of our school, and we look forward to working with you to make Edge Hill State School an outstanding educational institution.

If you have any questions, ideas, or would like to join our P & C, please feel free to contact us at

edgep&c

WHAT WE DO



**Out of School Hours Care
and Vacation Care**
Before and after school
every day, pupil free days
and school holidays
Bookings Ph 4037 9519



Tuckshop
Breakfast & Lunch
Open every day
Birthday Icy Poles available
Orders via Flexischools App



Uniform Shop
Hats, Shirts, Shorts/Skorts,
Jackets, Rashies, Goggles,
Swimming/Library Bags
Open Wed 8.30 to 9am
Orders via Flexischools App



**Sustainability and
Environment**
Containers for Change Pod
Scheme ID C10213846
Supporting the Kitchen
Garden Program



Infrastructure & Resources
Play Grounds, Shade Sails,
Undercover Walkways.
Books, Sports Equipment,
Musical Instruments,
Classroom Refrigerators



Events
Big Family Breakfast,
Discos, Book Fairs
Mothers/Fathers Day,
and more...

pandc@edgehillss.eq.edu.au. Together, we can make a difference in the lives of our students and foster a strong and connected school community.



Edge Hill
STATE SCHOOL
Honour and Labour

